

STATE OF FLORIDA  
COUNTY OF PALM BEACH  
This plat was filed for record at \_\_\_\_\_, this day of \_\_\_\_\_, 1996, and duly recorded in Plat Book No. \_\_\_\_\_ on Pages \_\_\_\_\_ thru \_\_\_\_\_.  
DOROTHY H. WILKEN  
Clerk Circuit Court  
By: \_\_\_\_\_

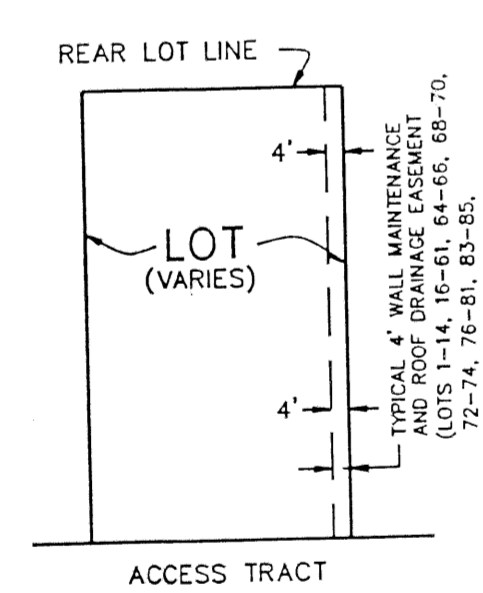
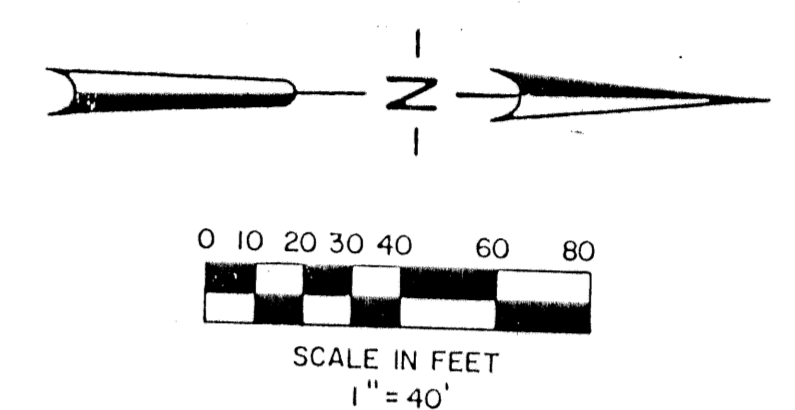
# OLIVE TREE - PARCEL 6C

BEING A REPLAT OF A PORTION OF OLIVE TREE - PHASE 5A/6B OF THE RIVER BRIDGE P.U.D., (P.B. 76, PGS. 102 - 104) LYING IN SECTION 10, TOWNSHIP 44 SOUTH, RANGE 42 EAST CITY OF GREENACRES, PALM BEACH COUNTY, FLORIDA.  
JANUARY 1996 SHEET 3 OF 3

- LEGEND**
- D.E. DRAINAGE EASEMENT
  - U.E. UTILITY EASEMENT
  - P.B. PLAT BOOK
  - O.R.B. OFFICIAL RECORD BOOK
  - PC. POINT OF CURVATURE
  - PT. POINT OF TANGENCY
  - P.O.C. POINT OF COMMENCEMENT
  - P.O.B. POINT OF BEGINNING
  - P.C.P. PERMANENT CONTROL POINT
  - P.R.M. PERMANENT REFERENCE MONUMENT
  - R/W RIGHT-OF-WAY
  - REF. REFERENCE
  - SEC. SECTION
  - TWP. TOWNSHIP
  - RAD. RADIAL
  - RGE. RANGE
  - P.L.S. PROFESSIONAL LAND SURVEYOR
  - L.B. LICENSED BUSINESS
  - TYP. TYPICAL
  - N.R. NON-RADIAL

OKEEHEELEE CANAL

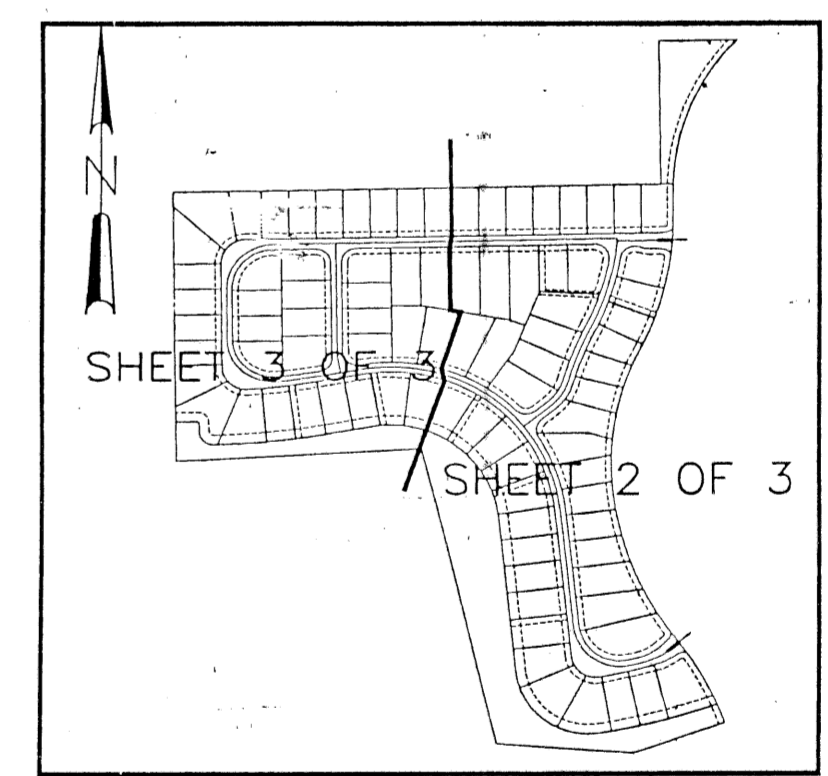
80' PALM BEACH COUNTY ROAD R/W



**TYPICAL LOT DETAIL**  
NOT TO SCALE  
4" WALL MAINTENANCE AND ROOF DRAINAGE EASEMENT (SEE DEDICATION NO. 6)



PLAT BEACH FARMS COMPANY PLAT NO. 3 (P.B. 2, PG. 47)



**SHEET LOCATION MAP**  
NOT TO SCALE

SUBDIVISION # OLIVE TREE  
BOOK 76 PAGE 133  
FLOOD ZONE FLOOD MAP #  
QUAD # ZONING  
SE ZIP CODE  
PUD NAME

**PETSCHÉ & ASSOCIATES, INC.**  
Professional Engineers - Land Surveyors - Development Consultants - Testing Services  
2581 Metrocentre Boulevard, Suite 6, West Palm Beach, Florida 33407 (407) 640-3800  
6799 Overseas Highway, Suite 7, Marathon, Florida 33050 (305) 743-5788  
1600 Redbud Boulevard, Suite 402, McKinney, Texas 75069 (214) 562-9606

**OLIVE TREE - PARCEL 6C**  
SECTION 10, TOWNSHIP 44S., RANGE 42E.  
CITY OF GREENACRES, FLORIDA

Drawn by: D.W.O./M.E.H.	Date: SEPT. 1995	SCALE: 1" = 40'	JOB NUMBER: 95-053	SHEET OF 3 OF 3
Designed by: R. HAGLER	Checked by:			